



kzn education

Department:
Education
KWAZULU-NATAL

Visit the Intranet on <http://home.kzneducation.gov.za>



IMVUSELELO PROJECT

***A journey of a thousand miles begins with
a single step--Confucius.***



...dedicated to service and performance
beyond the call of duty.

Not receiving new mails? Is your machine hanging when you try to log in? Log a call on 0860 KZND OE or 0860 596 363 or with your IT Officer



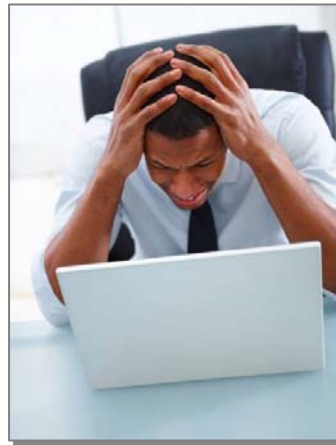
kzn education

Department:
Education
KWAZULU-NATAL

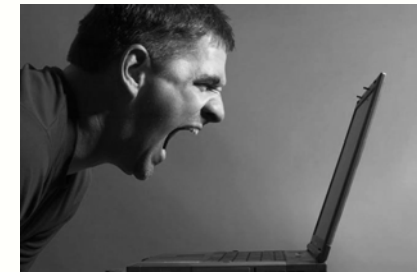
Visit the Intranet on <http://home.kzneducation.gov.za>



**Current system affecting
your productivity?**



**Frustrated with
Slow Mails?**



**Feel like technology
has left you behind?**

**IMVUSELELO
PROJECT**

...dedicated to service and performance
beyond the call of duty.

Not receiving new mails? Is your machine hanging when you try to log in? Log a call on 0860 KZND OE or 0860 596 363 or with your IT Officer



kzn education

Department:
Education
KWAZULU-NATAL

Visit the Intranet on <http://home.kzneducation.gov.za>



The Future is Now!

The KZN Department of Education, together with its partner SITA is proud to introduce

IMVUSELELO PROJECT

WHAT TO LOOK OUT FOR?

- Implementation Of Latest Technology
- Email And Webmail Stable, Reliable And Easy To Access
- Emails sent today, delivered and received today
- Regular Antivirus Updates
- Data Regularly Backed Up



The project team will be embarking on an information campaign, designed to keep you informed every set of the way. Keep an eye on your Intranet (<http://home.kzneducation.gov.za>) for further details

...dedicated to service and performance
beyond the call of duty.

Not receiving new mails? Is your machine hanging when you try to log in? Log a call on 0860 KZND OE or 0860 596 363 or with your IT Officer



kzn education

Department:
Education
KWAZULU-NATAL

Visit the Intranet on <http://home.kzneducation.gov.za>



MIGRATION IN PROGRESS



What is being done?

➤ In order to access any new mails, your Mailbox and PC will be migrated to the new KZN Education domain

What do YOU need to do?

➤ Please make every effort to leave your computer **switched on and connected to the network after hours.**

➤ If you cannot leave your PC\Laptop on, the process will run every 2-3 hours and attempt to move you to the new system.

➤ **Should you be working on any documents during normal working hours, please ensure that you save your documents regularly, as your PC will reboot during the Migration process**

How Do I know I have been Migrated?

➤ When you press CTRL + ALT + DELETE to log on, you will notice that the domain is set to KZNDOE. This is the new domain. Please log on with your normal username and password to KZNDOE.

PROJECT **IMVUSELELO**

If your computer does not automatically show **KZNDOE** when log on, please continue to work on **ESPLANADE** as per normal. Your computer has not migrated as yet and will be attended to.

Getting KwaZulu-Natal Learning...
Whatever it takes!

Not receiving new mails? Is your machine hanging when you try to log in? Log a call on 0860 KZNDOE or 0860 596 363 or with your IT Officer



kzn education

Department:
Education
KWAZULU-NATAL

POST-MIGRATION



What do you do, If, after your PC / Profile has been Migrated:

- **You are not receiving new mails**
- **Your login screen is still reflecting “Esplanade”**
- **Your workstation is freezing on logon**

**LOG A CALL ON 0860 KZND OE OR 0860 596 363 OR
WITH YOUR IT OFFICER**

IMVUSELELO
PROJECT Getting KwaZulu-Natal Learning...
Whatever it takes!

Visit the Intranet on <http://home.kzneducation.gov.za>



kzn education

Department:
Education
KWAZULU-NATAL

POST-MIGRATION

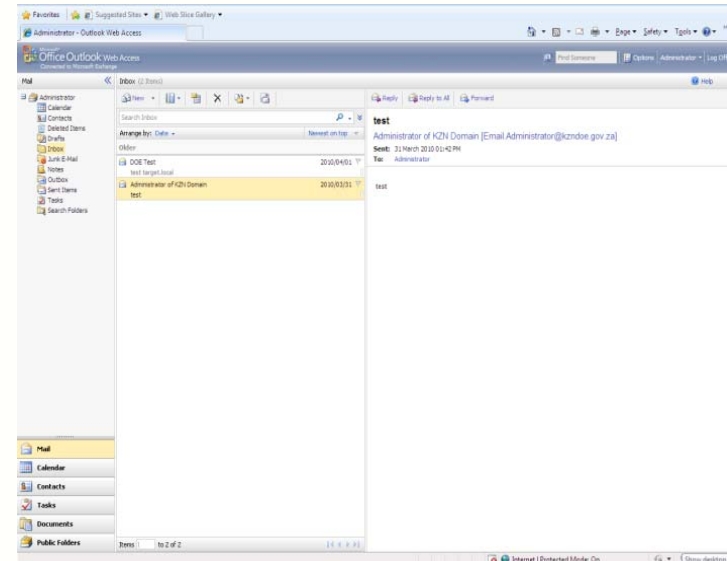


GREAT NEWS!

You can now make use of the Department's NEW LOOK Webmail facility



You now only need
one password
on the new system



Webmail Sample Inbox

After your successful migration, to Login to the new DoE Webmail, type as follows:

kzndoe\<your user name>

Eg: kzndoe\thabisop

Password: (Use same password as when logging on to Windows)

PROJECT IMVUSELELO
Getting KwaZulu-Natal Learning...
Whatever it takes!

Not receiving new mails? Is your machine hanging when you try to log in? Log a call on 0860 KZND OE or 0860 596 363 or with your IT Officer