



IMVUSELELO PROJECT

NEWSLETTER 2

August 2010

Migration Success!

After some minor issues establishing the connection between the "old" mail server and the "new" Mail Server, we have successfully managed to migrate the majority of user accounts at Truro House and Malgate Building! This is indeed a MAJOR milestone and something the team is very proud of!

Users should experience no real difference at this moment, excepting for their access to Webmail. Applicable users are now able to access the new "webmail" account – does it not look snazzy?

Microsoft Office Outlook Web Access

Security (show explanation)

This is a public or shared computer

This is a private computer

Use Outlook Web Access Light

Domain\user name:

Password:

Log On

Connected to Microsoft Exchange
© 2007 Microsoft Corporation. All rights reserved.

Microsoft Office Outlook Web Access

Security (show explanation)

This is a public or shared computer

This is a private computer

Warning: By selecting this option, you confirm that this computer complies with your organization's security policy.

Use Outlook Web Access Light

Domain\user name:

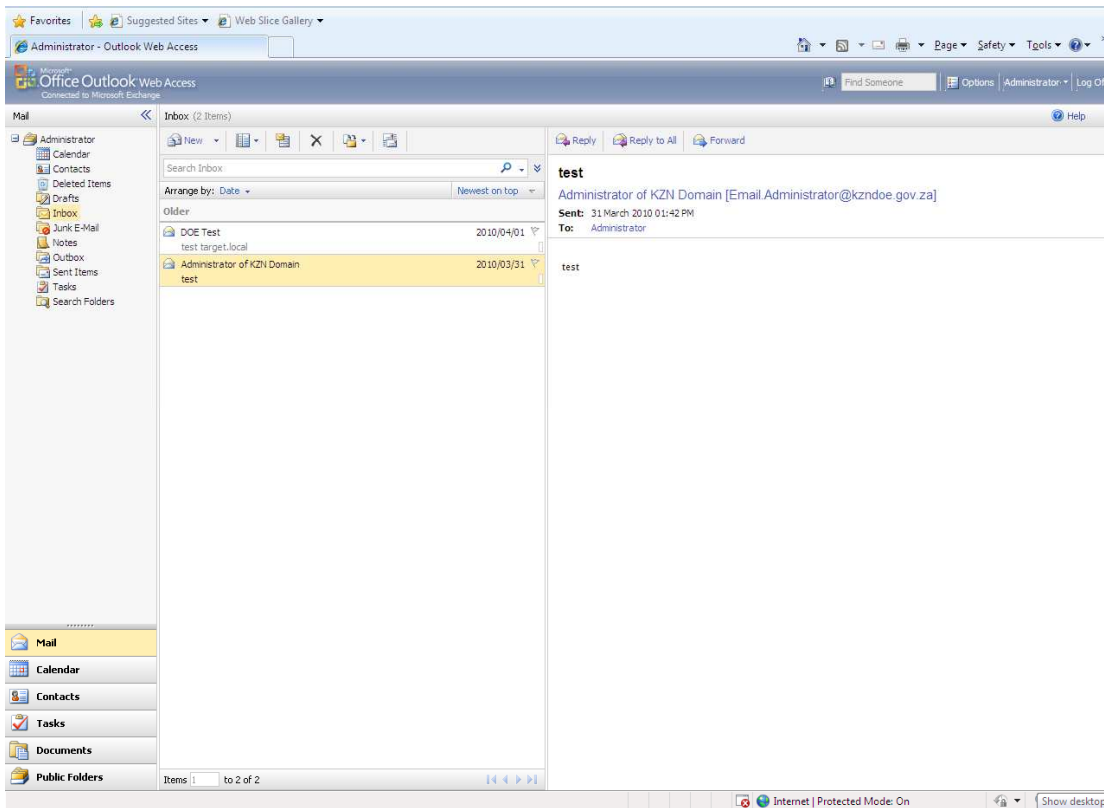
Password:

Log On

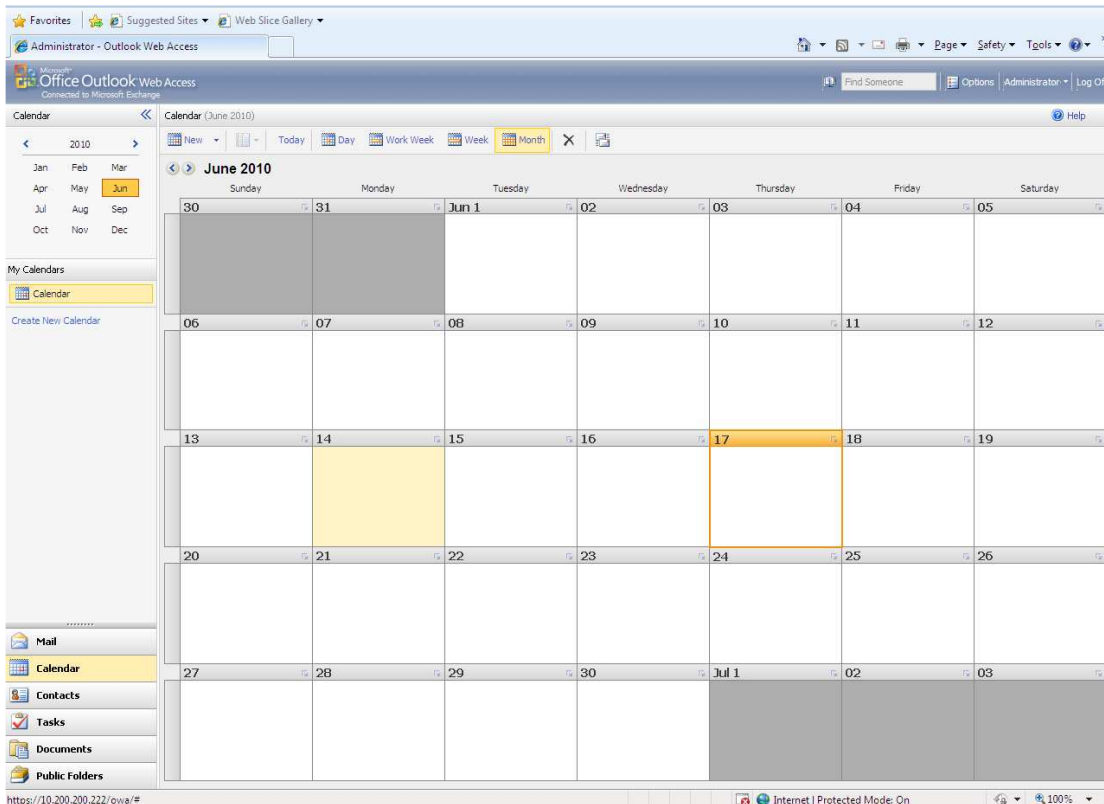
Connected to Microsoft Exchange
© 2007 Microsoft Corporation. All rights reserved.

Another feature of the "new" webmail, is that when using this feature, it looks and feels exactly the same as Microsoft Outlook 2007, as you can see from the screenshots below

Webmail Sample Inbox



Webmail Sample Calendar



How does this affect You?

As you are aware, the Department of Education is in the process of upgrading its computer systems to the latest and greatest technologies

This will have a direct impact on every user, so please take the time to read this notice.

The Department of Education will be cut over to the new system using a branch-by-branch approach.

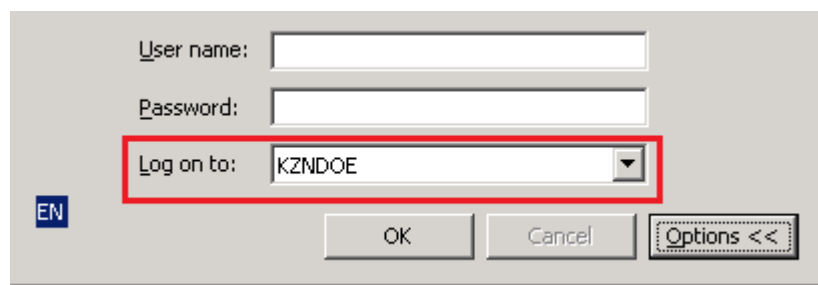
This will mean the following for **all Education** users:

Your email will be cut over to the new system. In order to do this, your computer **MUST** be migrated to gain access to any new emails from this point forward. It is therefore essential that we complete this process for you in the shortest possible time.

Therefore:

- Please make every effort to leave your computer **switched on and connected to the network after hours**. This will allow us to run the necessary processes overnight and not interfere with your day. You will be advised on completion of the migration of your account.
- If you cannot leave your PC\Laptop on, the process will run every 2-3 hours and attempt to move you to the new system.
- Once your PC has been moved, you should be able to work as normal, and have access to your email.
- The Department of Education & SITA will have extra help on site to assist with any users with problems or issues that may arise due to this.
- **The start date for your migration will be communicated to you via your IT Officer**

Once your computer has been rebooted (either after hours, or 2-3 hours as per above), when you press CTRL + ALT + DELETE to log on, you will notice that the domain is set to KZNDOE. This is the new domain. **Please log on with your normal username and password to KZNDOE.**



The image shows a Windows login dialog box. It has three input fields: 'User name:', 'Password:', and 'Log on to:'. The 'Log on to:' field is a dropdown menu and is highlighted with a red rectangular box. It currently displays 'KZNDOE'. Below the input fields are three buttons: 'OK', 'Cancel', and 'Options <<'. There is also a small 'EN' icon in the bottom left corner of the dialog box.

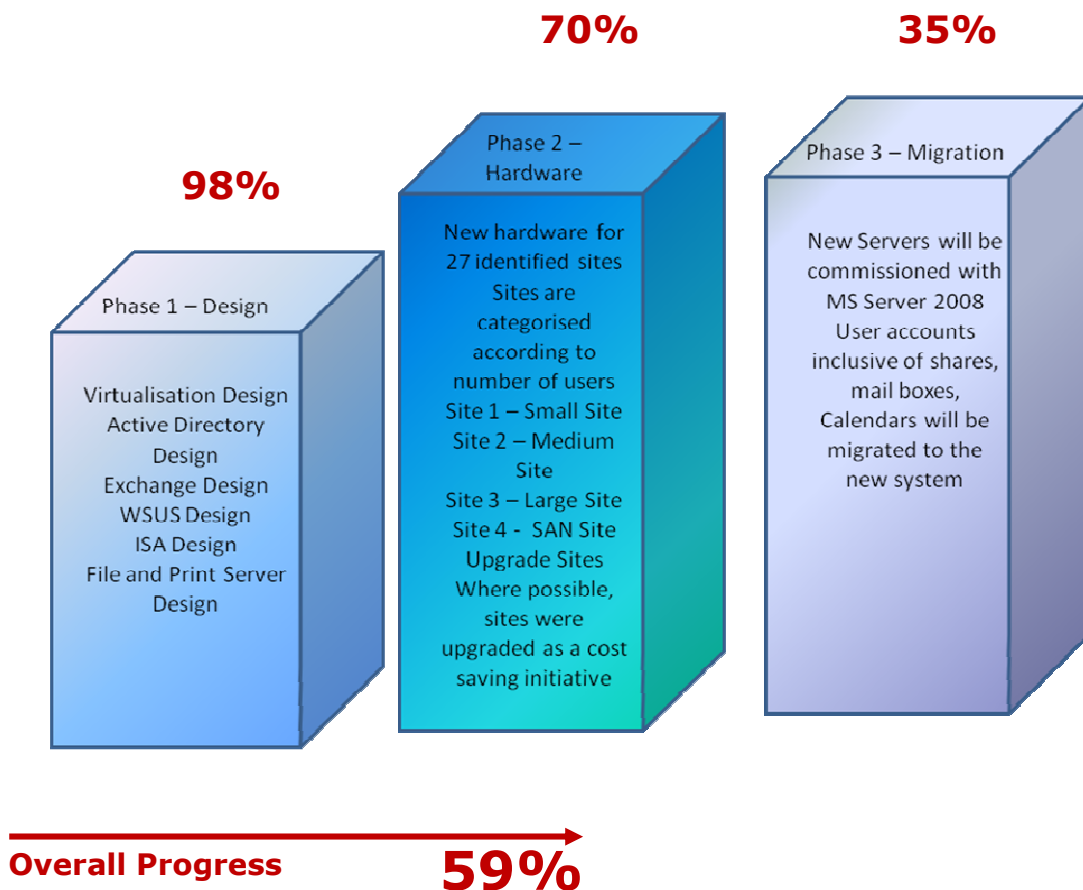
If your computer does not automatically show KZNDOE when you press CTRL + ALT + DELETE to log on, please continue to work on ESPLANADE as per normal. Your computer has not migrated as yet and will be attended to.

If you have any problems, please mail Imvuselelo@kzndoe.gov.za, an e-mail account that has been created to deal with any problems related to this project. Alternatively contact the Education Call Centre on 0860 KZNDOE or 0860 596 363.

Project Imvuselelo is being deployed in three phases

Phase 1 Design Phase	Phase 2 Hardware Upgrade Phase	Phase 3 Migration Phase
<p><u>Includes:</u></p> <ul style="list-style-type: none"> Virtualisation Design Active Directory Design Exchange Design WSUS Design ISA Design File & Print Server Design 	<p><u>Includes:</u></p> <ul style="list-style-type: none"> New hardware for 27 identified sites Sites are categorised according to the number of users Site 1 – Small site Site 2 – Medium site Site 3 – Large site Site 4 – SAN Sites Upgrade sites Where possible, sites were upgraded as a cost saving exercise 	<p><u>Includes:</u></p> <ul style="list-style-type: none"> Planning Phase <ul style="list-style-type: none"> Methods of migration Pre-migration steps Post Migration steps Build Stage <ul style="list-style-type: none"> Setup of the new forest and domain, related servers and services Deployment Phase <ul style="list-style-type: none"> Once the pilot testing is complete and any resulting problems are reviewed and resolved, the actual live migration will begin. <ul style="list-style-type: none"> This will migrate all user accounts, computer accounts, groups, distribution lists, public folders and mailboxes to the new AD Domain

Where are we now?



The KZN Department of Education Team

L.C. Mbobo
Project Sponsor

H.R. Mcumu
Finance

L. Rambaran
Finance

B.H. Mthabela
EMIS

FK Dubazana
ELITS

S Dubazana
ELITS

P. Dikgomo
MST/ICT

H. Mhlane
MST/ICT

Mr. A.M. Moodley
IT Services

Mr. R. Moodley
Communication

T. Pitso
IT Services

C. Wigans
IT Services – Project Manager

That's it for now – check back with us for the next issue, featuring helpful tips for you the user!

To access this and other Newsletters on the [Intranet](#) homepage (<http://home.kzneducation.gov.za>), and click on the Imvuselelo icon

TEAM IMVUSELELO